

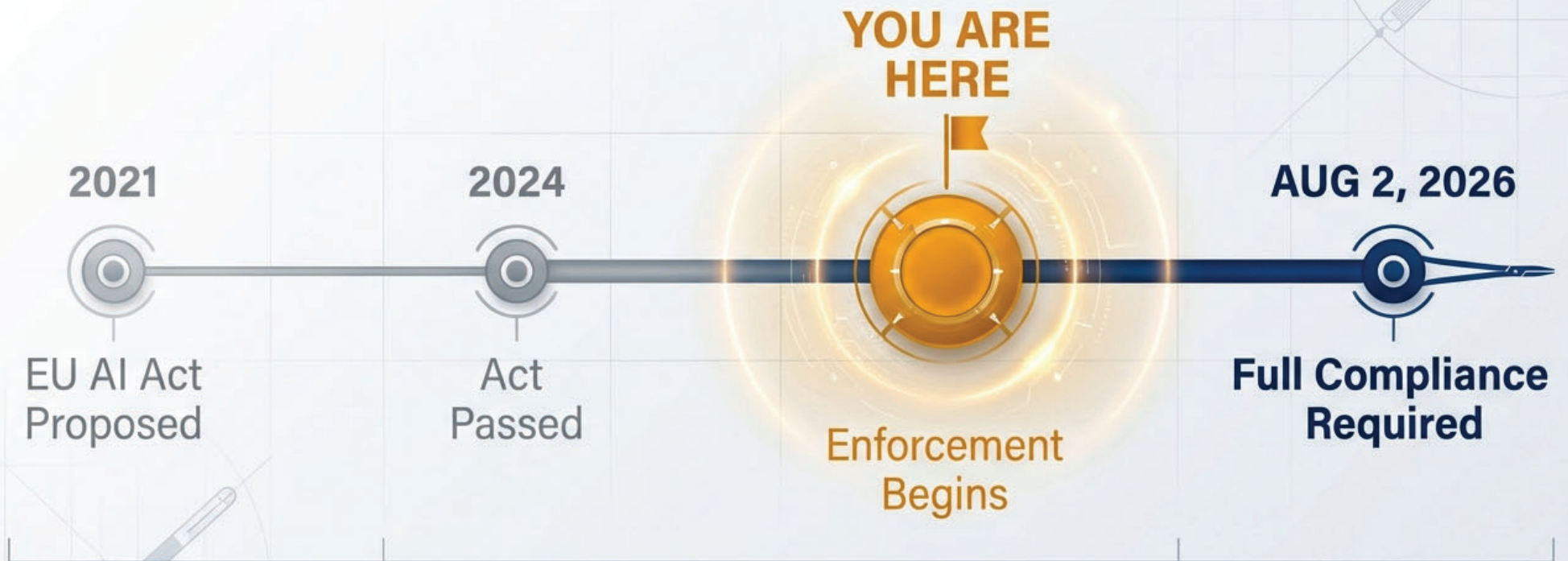
The AI Governance Reckoning Has Begun

EU AI Act Enforcement Started February 2, 2025

FEB 2 2025

Graphic created by Andrea N. Grant

The Grace Period is Over



This is the first comprehensive AI regulation globally. It applies to organizations worldwide if their AI is used in the EU.

Which Path Are You On?



PROACTIVE ORGANIZATIONS

- ✓ **Status: Adapting Smoothly**
- ✓ Risk classification systems active
- ✓ Documentation standards in place
- ✓ Human oversight protocols defined
- ✓ Accountability structures clear



REACTIVE ORGANIZATIONS

- ⚠ **Status: Scrambling**
- ⚠ Running "Naked AI" systems
- ⚠ No governance guardrails
- ⚠ Retrofitting compliance
- ⚠ Operating in Crisis Mode

Insight: Retrofitting compliance is exponentially harder and more expensive than building it from the start.

The Cost of Non-Compliance

€35 MILLION

**OR 7% of Global
Annual Turnover
Whichever is HIGHER**



Penalties for prohibited AI practices.

Banned Practices: Effective Immediately

As of Feb 2, 2025, the following are prohibited:



Social Scoring Systems



Manipulative AI Techniques

PROHIBITED



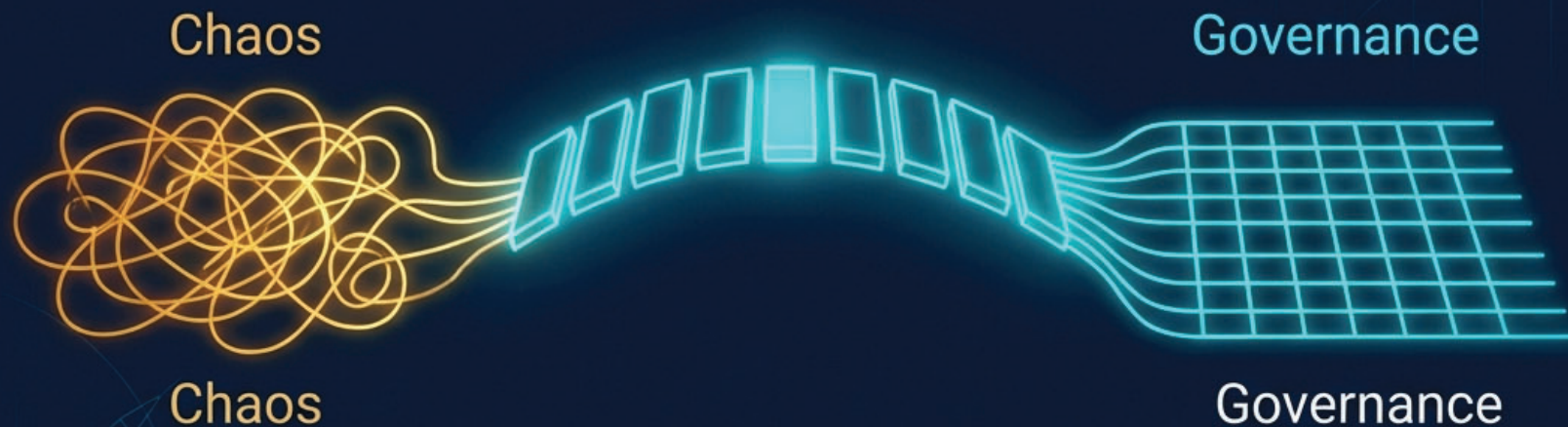
Untargeted Biometric Scraping



Exploitative Vulnerability Systems

Moving From Reactive to Proactive

The difference between scrambling and adapting comes down to your governance framework.



**Can't answer the following 5 questions confidently?
February 2nd was your warning shot.**

01

CRITICAL QUESTION

Inventory & Visibility

Do you have an AI system inventory with risk classifications?



The Risk (Reactive)

"Naked AI" and Shadow IT. Unknown models operating without oversight create invisible liability.



The Governance Fix (Proactive)

Comprehensive audit and risk tagging (Low, High, Unacceptable) for every algorithm in the stack.





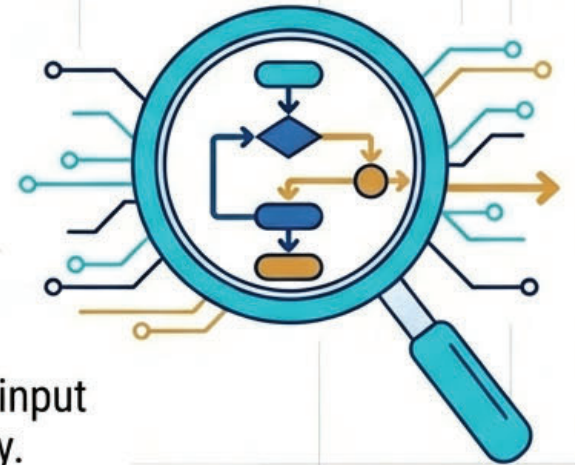
02

CRITICAL QUESTION

Traceability

Can you trace decisions back through your AI systems' logic?

-  **The Risk (Reactive)**
Inability to defend decisions when challenged by regulators or consumers. The "Black Box" problem.
-  **The Governance Fix (Proactive)**
Implementation of logging standards that document input data, logic paths, and output decisions for auditability.





03

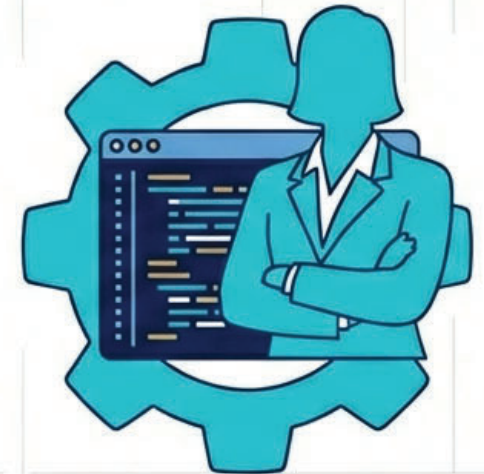
CRITICAL QUESTION

Human Oversight

Do you have human oversight that functions at scale?

-  **The Risk (Reactive)**
"Rubber-stamping" AI decisions without understanding them, or lack of resources to monitor automated output.

-  **The Governance Fix (Proactive)**
Defined protocols for human intervention and review, ensuring humans are not just spectators to the AI.



04

CRITICAL QUESTION

Accountability

Is someone accountable when AI fails quietly?

-  **The Risk (Reactive)**
Crisis mode blame-shifting. Confusion over whether IT, Legal, or Operations owns the failure.

-  **The Governance Fix (Proactive)**
Clear accountability structures where specific roles own the output and performance of specific AI systems.



05

CRITICAL QUESTION

Jurisdiction

Does your governance framework work across jurisdictions?



The Risk (Reactive)

Fragmented compliance efforts that break when applied to global operations.



The Governance Fix (Proactive)

A unified strategic framework that meets the highest standard (EU AI Act) and applies it globally for consistency.



“Trustworthy AI isn’t just about avoiding fines. It’s about building systems stakeholders can rely on, scale with confidence, and defend when challenged.”

ANDREA N. GRANT

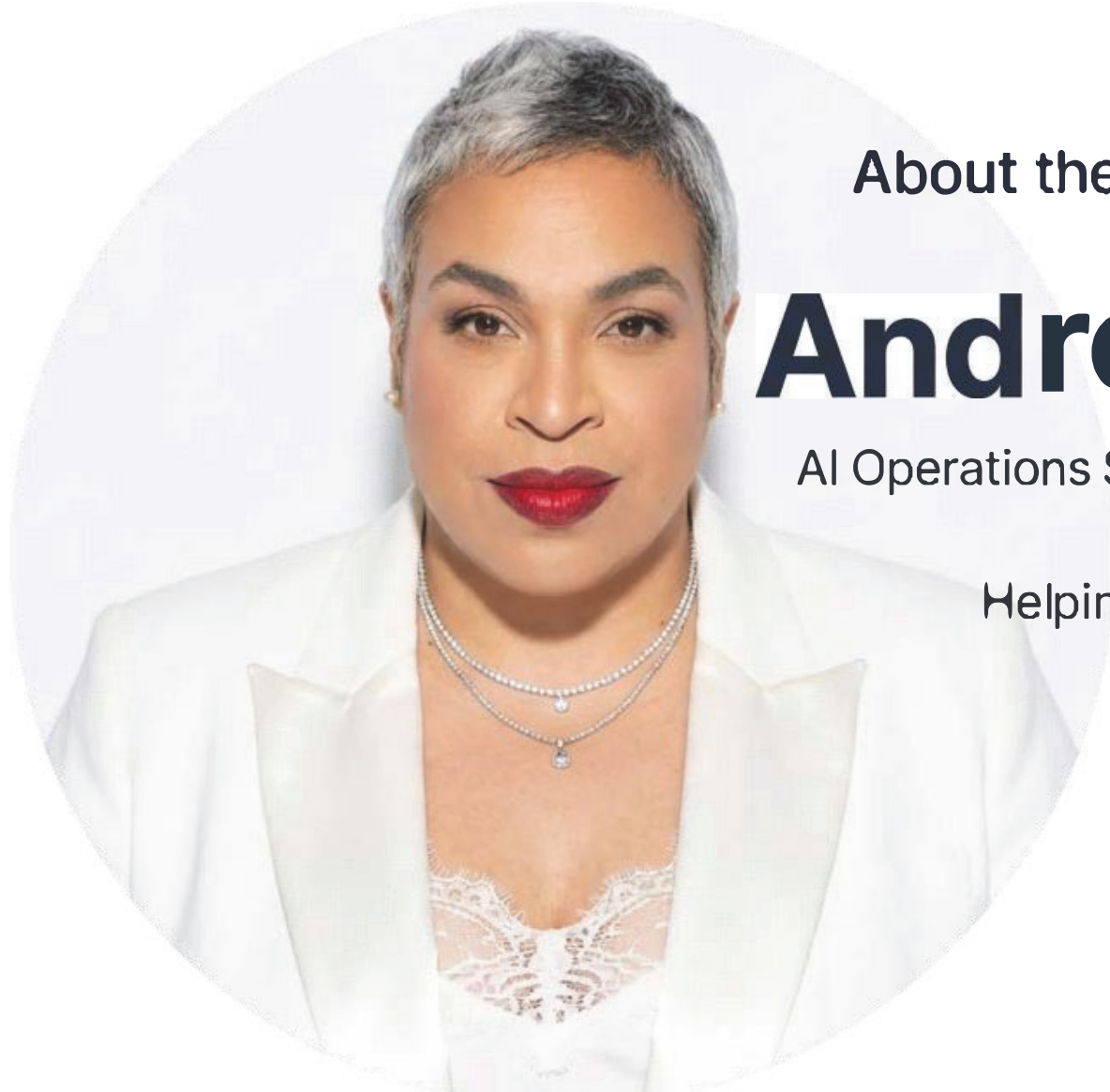
06 The Strategic Compliance Checklist

Building Proactive Governance

- Inventory & Risk Classification
- Traceability & Logic
- Human Oversight at Scale
- Clear Accountability Structures
- Cross-Jurisdictional Frameworks



**The Path to
Trustworthy AI**



About the Strategist

Andrea N. Grant

AI Operations Strategist | Strategic AI Leadership

Helping organizations scale by removing
bottlenecks that limit productivity