

CREATE A LIMITLESS CULTURE™

No matter the problem - Your people
are a part of the solution.

Give them the tools they need to achieve anything.



BEN WHITING

SPEAKER • ENTERTAINER • CONSULTANT

YOUR PEOPLE HAVE **LIMITLESS** POTENTIAL.

But without a connected culture and the ability to see all its possibilities, they will be limited.

THEY'LL:

- Struggle to communicate clearly and efficiently
- Experience unnecessary **drama and conflict**
- Spend way too much time in **unproductive, overly long meetings**
- Be paralyzed by **imposter syndrome**
- Feel **unsupported and unfulfilled at work**

**AND AS A RESULT, YOU'LL
SEE LOW PRODUCTIVITY,
HIGH TURNOVER, AND
RESISTANCE TO CHANGE.**

BUT...

- When people know how to **communicate effectively...**
- When they can create and sustain **quality relationships at work**
- And when they have the mindset **that anything is possible...**

...THERE ARE NO LIMITS TO WHAT THEY CAN ACHIEVE.

THIS IS HOW YOU CREATE A **LIMITLESS CULTURE**TM

amazon

AMERICAN EXPRESS



Ardent Mills

EQUIFAX

Bullhorn

CISCO

Coastal Community Foundation

facebook

Google

evergrain

MarathonOil

Hilton
HOTELS & RESORTS

HubSpot

LeaseLock

Turtle wax



MERCURY GATE

NIKE

NOVOLEX

perch

Pfizer

RE/MAX

RSM

Schlumberger

St. Jude Children's
Research Hospital

TED^x

UNiDAYS

WELLS
FARGO



HI! I'M BEN.

I LOVE PEOPLE. I LOVE HAVING FUN.

That's why, for more than two decades, I was a corporate entertainer, performing as a magician and mind reader in over 30 countries in almost every venue imaginable. From sales conferences to cruise ships, from Off-Broadway to the Las Vegas strip, I worked to create experiences that were fun, memorable, and meaningful for my audiences.

But, after years of performing, I felt something was missing.

I WANTED TO HELP PEOPLE.

And I knew the communication and connections skills I used to connect with audiences could help anyone build stronger relationships. I began sharing these principles with others and soon was hired by a global leadership development firm.

But my corporate clients still weren't reaching their full potential. That's because they weren't *just* struggling with communication and connection. They were struggling with their *mindset*—something magicians understand all too well.

SO, I CRAFTED A BLUEPRINT

...TO GUIDE ANY ORGANIZATION, FROM ASSOCIATIONS TO SMALL BUSINESSES TO FORTUNE 50 COMPANIES, IN CREATING THESE KINDS OF CULTURES—CULTURES WHERE THERE ARE NO LIMITS TO WHAT THEIR PEOPLE CAN ACHIEVE.

I share this roadmap to a Limitless Culture through keynotes and trainings in a fun, engaging atmosphere, combining entertainment with practical strategies for helping your people reach their full potential.

BECAUSE WHEN THEY DO, THE POSSIBILITIES ARE
LIMITLESS.

THE LIMITLESS CULTURE™ ROADMAP



STEP 1

COMMUNICATION

We all know people don't connect with the best ideas; they connect with the ideas that are communicated the best.

Here your people will learn to communicate in a way that's clear, succinct, and engaging (and doesn't waste anyone's time) so they can maximize productivity and efficiency in the workplace.

CONNECTION

Next, they learn to develop quality relationships through the power of connection, leading to greater engagement.

They transform from disconnected groups into high-performing teams and engage in effective feedback and egoless coaching. They begin helping each other take things to the next level.



STEP 2

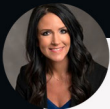


STEP 3

MINDSET

Finally, your teams adopt the mindset that will launch them beyond the impossible.

They learn how to effectively manage change, take appropriate risks, and most importantly, find as much fulfillment in work as they do at home. From here, **anything becomes possible.**



“

BEN'S TRAINING WAS THE HIGHLIGHT OF THE DAY AT OUR ANNUAL ALL-STAFF MEETING!

Our team learned valuable information and were thoroughly entertained and engaged the entire time. He had us laughing, near tears (in a good way), and reflecting on how we all contribute and play a piece in our organization.”

STACY BOUMAN

Employee Development Manager,
Range Bank



“

BEN IS A MASTER AT CONNECTING WITH PEOPLE. I MEAN, IT'S TRULY NEXT-LEVEL STUFF.

His ability to build connection and relate to people is a force to be reckoned with. Whether he's speaking from the keynote stage or facilitating a leadership development workshop, you'll be rapt from the outset.”

ERIC SPENCER

COO SkyeTeam Consulting



“

DESPITE CHALLENGES INNATE TO A VIRTUAL SETTING, BEN TOOK US ON AN INCREDIBLE JOURNEY THAT WE THOROUGHLY ENJOYED.

I was blown away by his positive attitude and the lengths he went to personalize the session.”

JULIE JOOHYUN LEE

Creative Development
Coordinator, Apple

CREATING A LIMITLESS CULTURE™

BETTER RESULTS, BETTER RELATIONSHIPS, LIMITLESS POSSIBILITIES

This high-impact, high-amazement keynote inspires your audience to create a culture where the impossible is possible and human connection has no limits. Ben crafts a jaw-dropping experience that will transform your organization and equip your employees with the skills and mindset to unleash their full potential.

THIS KEYNOTE IS IDEAL FOR ORGANIZATIONS THAT ARE

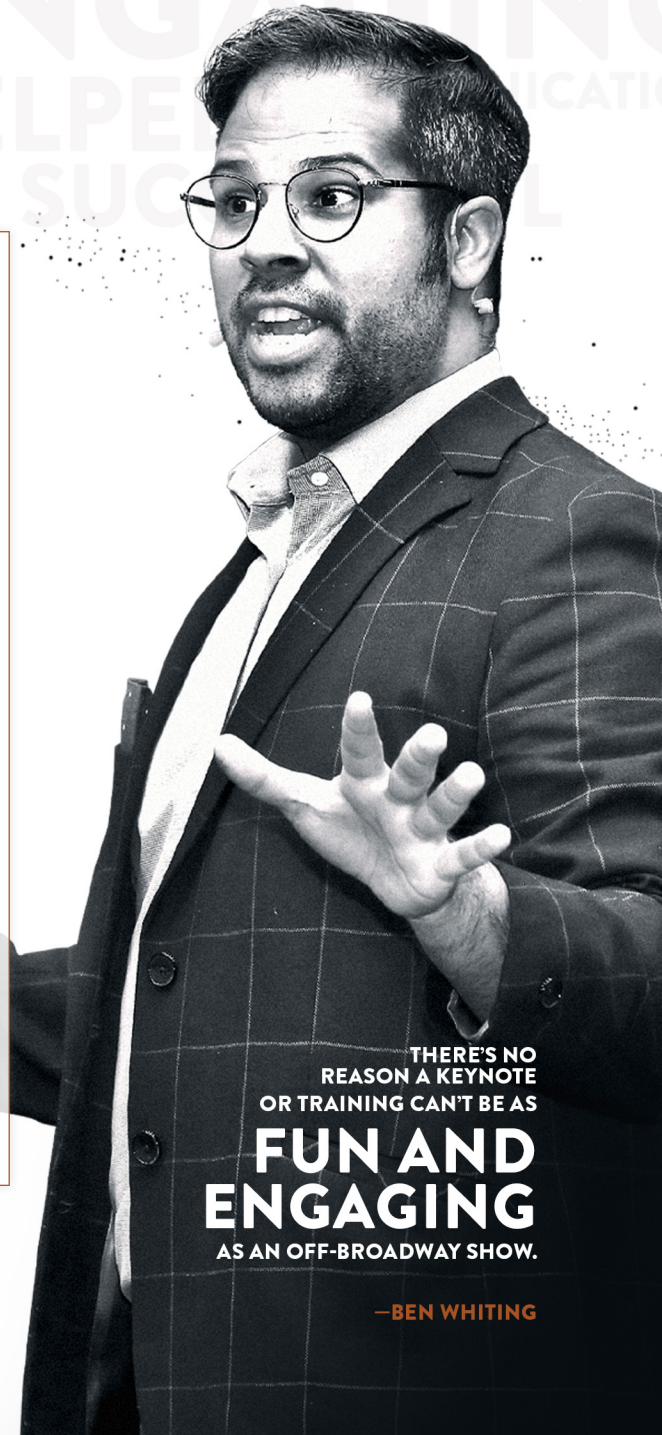
- ✓ **Struggling to navigate change** and change management
- ✓ **Tired of feeling the remote-work disconnect** and want to feel connected and engaged whether they're in person or not.
- ✓ **Losing time and money to miscommunication** and unnecessary drama
- ✓ **Trying to innovate** in a time when things are constantly changing
- ✓ **Ready to unleash the full potential** of their employees

YOUR AUDIENCE WILL LEAVE WITH

- ✓ **Concrete techniques for communicating more effectively** and engagingly at work and at home
- ✓ **Actionable insights** on creating an authentic connection with every interaction
- ✓ **Tools for sustaining a mindset that empowers** them to thrive through change, innovate courageously, and find fulfillment in their work
- ✓ **An unbelievably fun experience** with lessons they will never forget!

CONNECT WITH BEN TODAY

...to find out how he can best help you advance your goal!



THERE'S NO REASON A KEYNOTE OR TRAINING CAN'T BE AS
FUN AND ENGAGING
AS AN OFF-BROADWAY SHOW.

—BEN WHITING

Equip Your Employees to Achieve Their Full Potential With ben's

CUSTOMIZABLE WORKSHOPS

ON COMMUNICATION, CONNECTION, AND MINDSET

Available In-Person or Virtually

Additional workshop topics available upon request.

“

BEN IS AMAZING!! HIS COMBINATION OF CHARM AND MAGIC WAS SUPER ENGAGING, AND HE KEPT EVERYONE ON THE EDGE OF THEIR SEATS.

More importantly, Ben listened to what we were trying to accomplish from an educational perspective, and he tailored his content to our specific needs in a way that made it look like he was a member of our team.

JERRY GENNARIA

Director of Brand Strategy & Research, TOKY



MOST POPULAR WORKSHOP / BREAKOUT

1. COMMUNICATION SKILLS FOR ENGAGEMENT & INFLUENCE

1-2 Hour Training, Available In-Person or Virtually

Only 10% of what you communicate is in your words. The majority of communication is in how you say those words and in your body language. This training equips your team to communicate with maximum impact so their valuable ideas are completely understood.



Your teams will learn:

- ✓ The science behind what makes **people pay attention**
- ✓ **How to use their voice** so people don't just hear them but want to listen
- ✓ **Body language basics**, including how an effective posture can build trust, and how hand gestures can influence
- ✓ **The basics of good storytelling**, and how to use stories more effectively in your everyday conversation

Attendees will experience
an instantly applicable
shift in their ability to:

- ✓ Apply the principles of engagement to everyday communication
- ✓ Develop trust and connection through body language and tone of voice
- ✓ Influence and motivate others through the stories they tell

ADDITIONAL WORKSHOP TOPICS AVAILABLE UPON REQUEST.

OTHER WORKSHOPS / BREAKOUTS INCLUDE:

- 2. COMMUNICATING WITH AWARENESS (DiSC)**
2 Hour Training, Available In-Person or Virtually
- 3. CREATING A FEEDBACK CULTURE**
1-2 Hour Training, Available In-Person or Virtually
- 4. NAVIGATING CRITICAL CONVERSATIONS**
2 Hour Training, Available In-Person or Virtually
- 5. THRIVING AMIDST CONSTANT CHANGE***
2 Hour Training, Available In-Person or Virtually
*This keynote can be customized for growth mindset training.
- 6. INNOVATION THROUGH DESIGN THINKING**
2 Hour Training, Available In-Person or Virtually



“

BEN IS AMAZING!!

Just wrapped up a virtual event with one of my clients and Ben was fabulous. His combination of charm and magic was super engaging and he kept everyone on the edge of their seats. More importantly, Ben listened to what we were trying to accomplish from an educational perspective and he tailored his content to our specific needs in a way that made it look like he was a member of our team. I enthusiastically recommend Ben to anyone needing a speaker or educator for a corporate event. 25 Thumbs up!

JERRY GENNARIA

Director of Brand Strategy & Research, TOKY

THE LIMITLESS CULTURE™

TRANSFORMATION PROGRAM

Launch Your Organization Beyond the Impossible



2-4 month process minimum, 5 events

*Timeframe will vary based on the number of participants.

Information is great, but too much, too fast can quickly become overwhelming. We are hardwired to only learn and implement 1 to 2 new skills at a time. The Limitless Culture Transformation Program leverages focused, skill-specific learning to avoid information overload.

THE RESULT IS LONG-TERM, SUSTAINABLE CHANGE THAT ACTUALLY MOVES THE NEEDLE.

Ben guides your employees through an experiential learning process that makes them more effective team members while also making their lives easier. Between sessions, he'll stay connected with your HR team and share a blueprint they can implement right away to ensure the new skills your people are learning become habits, and are ingrained in the company culture.

**AT THE END,
YOUR EMPLOYEES WILL HAVE
A COMPLETE ROADMAP TO
IMPROVING COMMUNICATION,
CONNECTION, AND MINDSET
SO THEY CAN ACCOMPLISH
ANYTHING TOGETHER.**



“

BEN FACILITATED LEADERSHIP DEVELOPMENT COURSES FOR OUR WORKFORCE IN 20+ LOCATIONS AND IT WAS A HUGE SUCCESS.

Ben has an amazing ability to blend humor, magic, and personal stories to create a highly entertaining atmosphere, all while delivering a deeper message.”

JEFFREY BURRO

Environment, Health, and Safety Manager
at Marathon Oil Corporation



“

“Ben presents with great skill infusing humor and storytelling into his trainings. He spoke to multiple employee groups at our organization, including a wide variety of outside field personnel who don't typically like to sit still for long.”

BEN WAS ABLE TO NOT ONLY HOLD THEIR ATTENTION BUT ACTIVELY ENGAGE THEM.”

SHARI CULVER

VP of Communications and Member
Services, Great Lakes Energy

HERE'S HOW THE PROGRAM WORKS.



INSPIRE

THE LIMITLESS CULTURE™ KEYNOTE

Jumpstart change with Ben's dynamic, interactive keynote experience creating a Limitless Culture. Using powerful content and mind-blowing magic, your employees will feel motivated and ready to embrace a Limitless Culture, while having a lot of fun!



EQUIP

WORKSHOPS ON COMMUNICATION, CONNECTION, AND MINDSET*

Empower your employees to integrate the three components of a Limitless Culture into their everyday work life through advanced training. Your teams will attend three interactive, experiential workshops, each focused on one core component of a Limitless Culture™.

Communication: Communicating with Self Awareness

Connection: Creating a Feedback Culture

Mindset: Thriving Amidst Constant Change



ENGAGE

LAUNCH YOUR NEW CULTURE WITH A BANG!

Strengthen the relationships between your people and leadership and demonstrate leadership's support of your team's efforts. Ben will work with you to craft an educational, fun capstone event featuring a joint presentation. The event will celebrate your employees' progress and increase ongoing initiative and motivation by ensuring everyone has perfect clarity around the company vision and leadership buy-in.

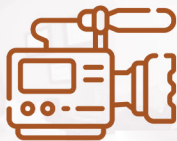


VIRTUAL DOESN'T HAVE TO BE BORING

It's funny how people will complain about screen fatigue 30-45 minutes into a Zoom meeting, and yet, those same people can watch 5-6 hours of Netflix without stopping!

THE PROBLEM ISN'T SCREEN FATIGUE. IT'S BOREDOM FATIGUE.

ALL BEN'S VIRTUAL PRESENTATIONS INCLUDE:



Professional-level cameras, lighting, and sound



Engaging, customized content



Magic designed specifically for video presentations



Seamless integration of sound effects and multiple camera angles



Interactive virtual experiences



Expert facilitation from a professionally trained virtual entertainer

VIRTUAL KEYNOTE



UP TO 400 ATTENDEES

Ben distills 36 years of entertainment and leadership development experience into a riveting virtual keynote. Immersed in an unforgettable experience designed for the screen, your audience will learn valuable communication, connection, and mindset skills they can instantly apply at work and home.

VIRTUAL WORKSHOPS



UP TO 30 ATTENDEES

No “camera off” attendees here! Ben’s virtual workshops on communication, connection, and mindset engage even the most reluctant participant. Ben creates magic on both sides of the screen with seamless integration of technology and personal interaction, all while teaching essential skills.



“

BEN WAS JUST INCREDIBLE IN TAKING A COMPLETELY VIRTUAL EXPERIENCE AND MAKING IT AS IMMERSIVE AND ENGAGING AS POSSIBLE.

Our attendees loved the event. It's tough to do this in a virtual world, and Ben nailed it.”

JESSE HAN

Manager, Amazon Advertising @ Amazon



“

Wowie, wow, wow, that's all I can say after experiencing Ben's segment in our virtual event today - I'm still totally baffled about how he proved his prowess in a variety of mediums. Incredible!

SECOND ONLY TO BEN'S MAGIC WAS HIS INCREDIBLE COMMAND OF ZOOM AND SOUND EFFECTS, MUSIC, AND MULTIPLE CAMERA ANGLES. BEN IS, IN A WORD, A MASTER!”

MEGAN STRAND

Communication Director, Engage For Good

VIRTUAL FAQs

What kind of webcam do you use?

No webcams here. I'm a full-blown virtual gear geek.

MY SETUP INCLUDES:

- 3 DSLR Cameras with Sigma lenses (I mounted one to my ceiling for an overhead view!)
- A Shure SMB7 microphone for meetings
- A Sennheiser AVX lavalier for presentations.
- A dbx 286s vocal processor for crystal clear sound
- One really big soft light with LED colored lights on my backdrop
- Three tables (with a mouse on each)
- 2 stream decks
- A stream deck foot pedal underneath
- And a partridge in a pear tree

What platform do you use for training?

Zoom is ideal as it's so universal. It's what I recommend, but I've worked on multiple platforms.

If you need me to use a different platform, I'm happy to flex for you.

How many people would you recommend attend a virtual presentation?

For a keynote, you can have up to 250, but for a training session, I recommend no more than 30 so everyone can interact.

Can it be customized?

ABSOLUTELY!

I tailor my presentations to your organization's needs so participants can apply the **Limitless Culture™** principles to their unique situation.

Can I record?

OF COURSE.

We will dive deeper into recording needs, distribution rights, and options as we customize your virtual experience. *(Just let me know you want a recording ahead of time, so I can have a good hair day for posterity's sake.)*

WATCH >>
BEN'S
VIDEO
REEL!

WWW.BENWHITING.COM



“

**NOT A SINGLE NEGATIVE
COMMENT, AMAZING!**

Ben delivered his Limitless Culture™ keynote at our annual convention of 1,000+ real estate professionals, and he knocked it out of the park! He received some of the best speaker feedback I have ever seen!”

BECKY FRANCOEUR

Events Manager at Michigan Realtors®

LET'S
CONNECT

+1 (770) 601-9534

ben@benwhiting.com



BEN WHITING

SPEAKER • ENTERTAINER • CONSULTANT

